

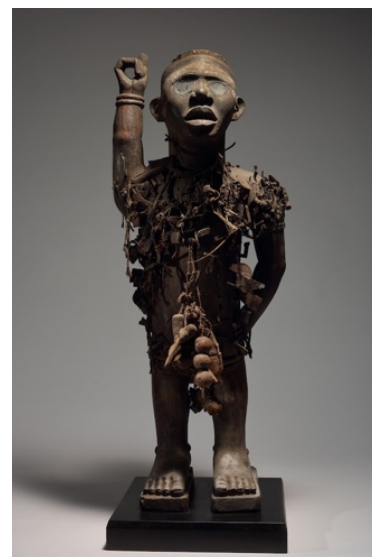
# LÉVY GORVY

PAT STEIR TO CURATE SUMMER EXHIBITION  
AT LÉVY GORVY IN NEW YORK

## ***Visible Traces (Mountain Water Air)***

June 25—August 9, 2019

Lévy Gorvy  
909 Madison Avenue  
New York



**New York**—Beginning June 25, 2019, Lévy Gorvy will present *Visible Traces (Mountain Water Air)*, an exhibition curated by the celebrated artist Pat Steir. The exhibition will include a selection of Steir's paintings alongside numerous works the artist has said she "hums to" in her mind—art from centuries past, such as historical Chinese scrolls and Kongo sculpture, and works by artists with whom Steir has engaged in ongoing and inspiring dialogue. Following the January 2019 opening of *Pat Steir: Silent Secret Waterfalls* at the Barnes Foundation in Philadelphia, and in anticipation of the artist's site-specific suite of works to be unveiled in October 2019 at the Hirshhorn Museum and Sculpture Garden in Washington, D.C., this exhibition will span the two main floors of Lévy Gorvy's landmark gallery at 909 Madison Avenue.

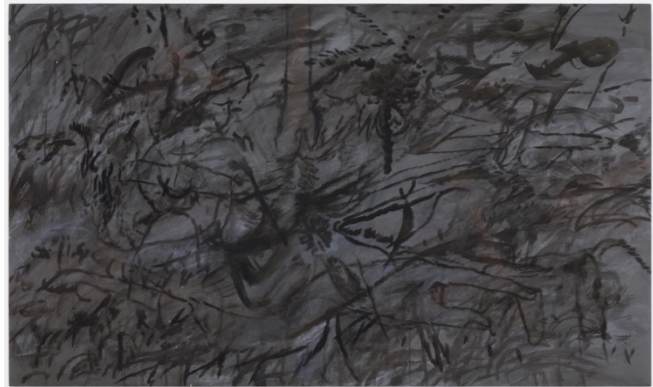
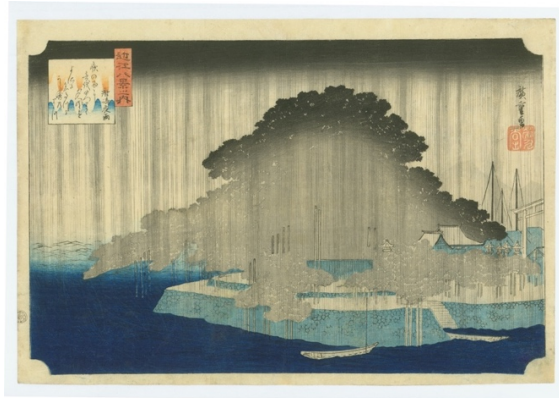
Central to the works Steir has selected for this exhibition are questions regarding the nature of abstraction. At what point does an image become abstract? Since she rose to prominence in the 1970s, Steir has channeled inspiration from East Asian art, Buddhist and Taoist philosophy, European Romanticism, American Minimalism, and Conceptualism into paintings that masterfully synthesize gesture, process, and reference. As Hirshhorn Director Melissa Chiu recently conveyed, "Steir's signature, multilayered canvases have time and time again redefined what it means to be a contemporary painter. Working within a framework that is simultaneously both painterly and conceptual, she has continued to create radical and profound abstractions."



Among the artists featured in *Visible Traces* will be the 18th-century Edo artists **Hokusai** and **Hiroshige**, 19<sup>th</sup>-century Romantic **Victor Hugo**, and 20<sup>th</sup>-century contemporaries such as **Alighiero Boetti**, **Sol LeWitt**, **Cy Twombly**, and **Agnes Martin**, whom Steir visited in New Mexico every August for thirty years. Works by Steir's peers such as **Joan Jonas**, **Mary Heilmann**, **Brice Marden**, **Helen Marden**, **Julie Mehretu**, **Ugo Rondinone**, **Stanley Whitney**, and **Terry Winters** will also be included in the exhibition. Together, the paintings and sculptures on view offer a framework in which to consider Steir's long commitment to the radical freedom that she has explained as, "being more attached to the process than the conclusion." This liberation



has been forged through her relationships to other artists and artworks, through what she has learned from and with them about simplicity, chance, and structure. *Visible Traces* reveals something of this resonant, ahistorical exchange on such abiding concerns as the potential of paint, the nuance of method, and the resonance of affinity.



### **About Lévy Gorvy**

Lévy Gorvy cultivates a program devoted to innovation and connoisseurship in the fields of modern, postwar, and contemporary art. Founded by Dominique Lévy and Brett Gorvy, Lévy Gorvy maintains gallery spaces at 909 Madison Avenue in New York, in Mayfair, London, and in Central, Hong Kong. The gallery fosters continued dedication to the living artists and artists' estates that it represents and offers a robust program of exhibitions and multidisciplinary events. The gallery also produces ongoing art historical research and original scholarship, publishing exhibition catalogues, monographs, and other key publications. The Zürich office, Lévy Gorvy with Rumbler, offers bespoke private advisory services to collectors and institutions around the globe.

909 Madison Avenue, New York, NY 10021, +1 212 772 2004  
22 Old Bond Street, London W1S 4PY, +44 (0) 203 696 5910  
Ground Floor, 2 Ice House Street, Central, Hong Kong, +852 2613 9568  
[www.levygorvy.com](http://www.levygorvy.com) | @levygorvy

### **Press Contacts**

Marta de Movellan, Lévy Gorvy, [marta@levygorvy.com](mailto:marta@levygorvy.com)  
Andrea Schwan, Andrea Schwan Inc., [andrea@andreaschwan.com](mailto:andrea@andreaschwan.com)

IMAGES. TOP LEFT: Alighiero Boetti. *Map (Mettere il mondo al mondo) [Putting the world into the world]*, 1983. Embroidery on canvas, 45.37 x 71 x 1.125 inches (115.3 x 180.3 x 2.9 cm). © 2019 Artists Rights Society (ARS), New York / SIAE, Rome. TOP RIGHT: Yombe People, Loango Kingdom. *Nail Power Figure*, 19<sup>th</sup> century. Wood, iron, resin, glass, fiber, textile and pigment, Height: 31 7/8 inches (81 cm). Image © Schweizer Premodern, New York. Private Collection, Courtesy of Schweizer Premodern, New York. MIDDLE LEFT: Pat Steir. *Wind and Water*, 1995. Oil on canvas, 108 x 108 inches (274.3 x 274.3 cm). © 2019 Pat Steir. Photo: Tom Powel Imaging. MIDDLE RIGHT: Mary Heilmann. *Night Swimmer*, 1998. Oil on canvas, 50 1/8 x 40 1/8 x 1 3/8 inches (127.3 x 101.9 x 3.5 cm). © 2019 Mary Heilmann. BOTTOM LEFT: Utagawa Hiroshige. *Night Rain at Karazaki (Karazaki no yau)*, ca. 1834. Color woodblock print, 9 3/4 x 14 1/2 inches (24.8 x 36.8 cm). BOTTOM RIGHT: Julie Mehretu, *Middle Grey (found marks)*, 2015-2017. Ink and acrylic on canvas, 32 x 54 inches (81.3 x 137.2 cm). © 2019 Julie Mehretu. Courtesy of the artist and Marian Goodman Gallery, New York. Photo: Tom Powel Imaging.