

# LÉVY GORVY

Visible Traces ( Mountain Water Air)

Curated by Pat Steir

## GROUND FLOOR



### **SOL LEWITT**

*Loopy Doopy*

1999

Gouache on paper

99 1/2 x 58 inches

(252.7 x 147.3 cm)



### **ALIGHIERO BOETTI**

*Map (Mettere il mondo al mondo)*

[Putting the world into the world]

1983

Embroidery on canvas

45.375 x 71 x 1.125 inches

(115.3 x 180.3 x 2.9 cm)



### **ALIGHIERO BOETTI**

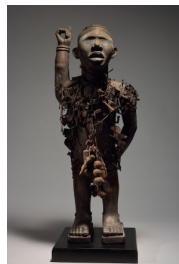
*Sofia LeWitt*

1983

Ballpoint ink on paper mounted  
on board

40.5 x 71 x 1.125 inches

(102.9 x 180.3 x 2.9 cm)



### **YOMBE PEOPLE, LOANGO KINGDOM**

*Nail Power Figure*

19th century

Wood, iron, resin, glass, fiber, textile  
and pigment

34 1/2 x 13 x 12 inches

(87 x 30 x 30 cm)

# LÉVY GORVY

Visible Traces ( Mountain Water Air)

Curated by Pat Steir

## GROUND FLOOR



**PAT STEIR**

*Fog in the East II*

1998–99

Oil on canvas

108 x 108 inches

(274.3 x 274.3 cm)



**UGO RONDINONE**

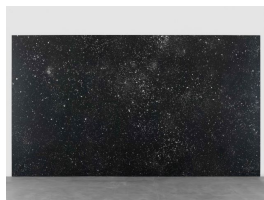
*ancient cloud*

2008

Sand, gravel, and concrete

106 5/16 x 60 1/4 x 32 15/16 inches

(270 x 153 x 83.7 cm)



**UGO RONDINONE**

*erstermaizweitausendundzwölf*

2012

Acrylic paint on canvas with  
plexiglass plaque

149 5/8 x 264 3/16 inches

(380 x 671 cm)



**JULIE MEHRETU**

*Middle Grey (found marks)*

2015-2017

Ink and acrylic on canvas

32 x 54 inches

(81.3 x 137.2 cm)

# LÉVY GORVY

## Visible Traces ( Mountain Water Air)

Curated by Pat Steir

### SECOND FLOOR



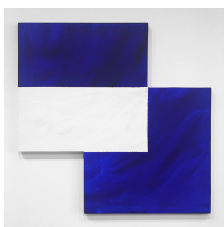
**HELEN MARDEN**

*Ocean Pure*

2019

Resin, acrylic, powdered paint,  
porcupine quills on canvas

50 x 64 inches  
(127 x 162.6 cm)



**MARY HEILMANN**

*White Water Geometry*

2015

Acrylic on wood panel

24 x 24 x .75 inches  
(61 x 61 x 1.9 cm)



**STANLEY WHITNEY**

*James Brown Sacrifice to Apollo*

2008

Oil on linen

72 x 72 inches  
(182.9 x 182.9 cm)



**JOAN JONAS**

*They come to us without a word XVI*

2013

Ink on paper

28 x 40 inches  
(71.1 x 101.6 cm)



**JOAN JONAS**

*They come to us without a word XIV*

2014

Ink on paper

21 x 28 inches  
(53.3 x 71.1 cm)



**JOAN JONAS**

*They come to us without a word XII*

2013

Ink on paper

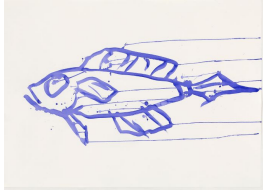
12 x 16 1/2 inches  
(30.5 x 41.9 cm)

# LÉVY GORVY

Visible Traces ( Mountain Water Air)

Curated by Pat Steir

## SECOND FLOOR



### JOAN JONAS

*They come to us without a word*

2013

Watercolor on paper  
31 1/8 x 43 1/16 inches  
(79.1 x 109.4 cm)



### MARY HEILMANN

*La Playa Del Rey*

1994

Oil on canvas  
30 x 30 inches  
(76.2 x 76.2 cm)

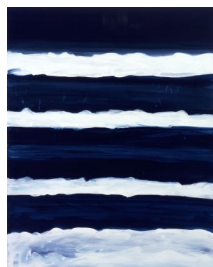


### ROB WYNNE

*Fly*

2008

Mirror polished  
aluminum 5 x 11 x 19  
inches  
(12.7 x 27.9 x 48.3 cm)



### MARY HEILMANN

*Night Swimmer*

1998

Oil on canvas  
50 1/8 x 40 1/8 x 1 3/8 inches  
(127.3 x 101.9 x 3.5 cm)



### PAT STEIR

*Silver Waterfall w/ Color Turbulence*

1989

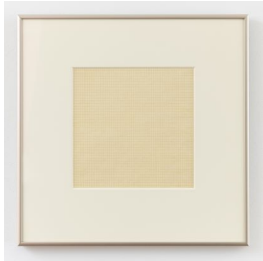
Oil on canvas  
89 x 116 inches  
(226.1 x 294.6 cm)

# LÉVY GORVY

Visible Traces ( Mountain Water Air)

Curated by Pat Steir

## SECOND FLOOR



**AGNES MARTIN**

*Untitled*

1964

Graphite and wash on paper

8 1/4 x 8 1/4 inches (21 x 21 cm)

Sheet: 11 1/4 x 12 inches (28.6 x 30.5 cm)



**AGNES MARTIN**

*Untitled*

1995

Pencil, ink and watercolor on paper

11 x 11 inches

(28 x 28 cm)



**AGNES MARTIN**

*Blue Painting*

2004

Acrylic and graphite on linen

12 1/8 x 12 1/8 inches

(30.8 x 30.8 cm)



**AGNES MARTIN**

*Untitled*

1959

Oil on linen

12 x 12 inches

(30.5 x 30.5 cm)

# LÉVY GORVY

## Visible Traces ( Mountain Water Air)

Curated by Pat Steir

### SECOND FLOOR



**BRICE MARDEN**

*Terre Verte Study*

2017

Kremer ink and graphite on  
handmade paper

12 1/2 x 9 3/4 inches

(31.8 x 24.8 cm)



**IKE TAIGA**

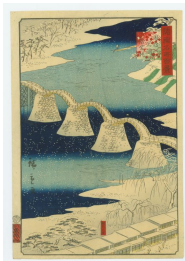
*Scholar's Pavilion in an Autumnal  
Mountain Landscape*

Edo period, 1760s

Hanging scroll: ink and light color  
on paper

52 3/8 x 15 inches

(133 x 38.1 cm)



**UTAGAWA HIROSHIGE II**

*Kintai Bridge at Iwakuni, Suō*

*(Bōshū) Province*

November 1859 (Ansei VI, 11th month)

Color woodblock print

14 1/2 x 10 inches

(36.8 x 25.4 cm)



**UTAGAWA HIROSHIGE**

*Evening Rain at Karazaki from Eight Views  
in Ōmi Province*

c. 1834

Color woodblock print

9 3/4 x 14 1/2 inches

(24.8 x 36.8 cm)



**KATSUSHIKA HOKUSAI**

*The Poem of Sangi Takamura from One*

*Hundred Poems as told by the Nurse*

c. 1835–36

Color woodblock print

9 7/8 x 14 3/8 inches

(22.9 x 35.6 cm)

# LÉVY GORVY

Visible Traces ( Mountain Water Air)

Curated by Pat Steir

## SECOND FLOOR



### **VICTOR HUGO**

*A Gothic Castle by a Lake*

1858

Pen black and brown ink and wash  
heightened with wash and crayon

9 5/8 x 9 3/4 inches  
(24.4 x 24.8 cm)



### **TERRY WINTERS**

*Free Union*

1983

Oil on linen

79 x 104 1/4 inches  
(201 x 265 cm)