

# Tom Wesselmann

February-March 2006

Paintings and Drawings



Great American Nude #1, 1961  
mixed media and collage on board  
48 x 48 in.



Little Great American Nude #27,  
1967  
Wooden cutout of a nude woman  
lying down  
8 1/2 x 16 in



Great American Nude #92, 1967  
Liquitex & collage on panel  
48 x 66 in.



The Great American Nude #38, 1962  
Oil and collage on board  
48 x 60 in.



Study for Bathroom Collage #1, 1963  
charcoal on paper mounted on board  
48.4 x 57.9 in.



Mouth #2, 1966  
oil on shaped canvas  
39 x 79 in.



Great American Nude #34, 1962  
mixed media and assemblage on board  
48 x 48 in.



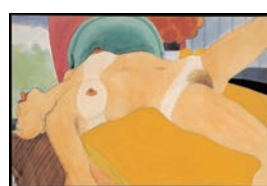
Drawing for Bedroom Painting #6, 1969  
liquitex, gesso and charcoal on linen  
27.5 x 45 in.



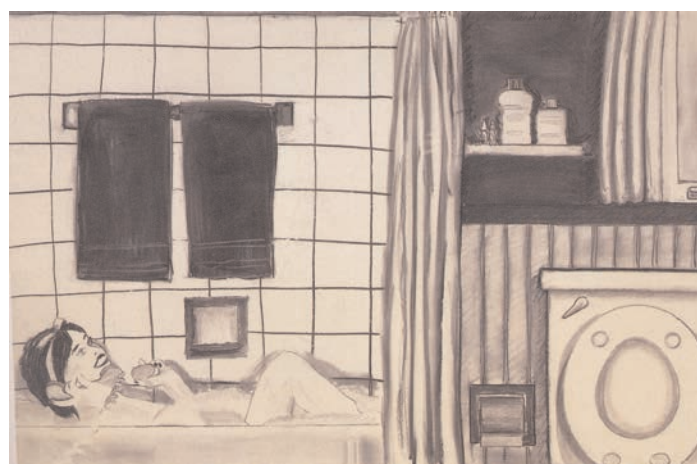
Interior #2, 1964  
acrylic, collage, assemblage including  
working fan, clock and light  
60 x 48 x 5 in.



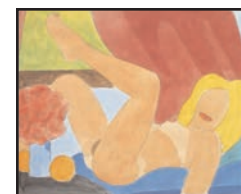
Drawing for Great American  
Nude #20, 1961  
charcoal on paper  
60 x 48 in.



Nude w/Tongue  
Out, 1966  
liquitex and pencil  
on panel  
9 1/2 x 13 5/8 in.



Drawing for Bathroom Collage #2, 1963  
charcoal on paper  
48 x 72 in.



Study for Great American  
Nude #95, 1967  
thinned liquitex and pencil on  
panel  
8 3/4 x 10 5/8 in.



Still Life #21, 1962  
acrylic and collage on board with recorded tape  
48 x 60 in.



Still Life #34, 1963  
acrylic and collage on panel  
47.5 in.



Study for Bedroom Painting #8, 1967-8  
Oil on canvas  
46.5 x 52 in.



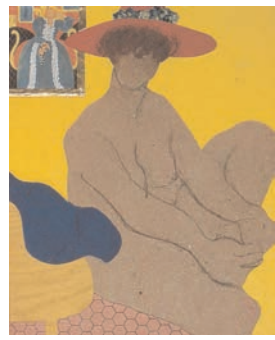
# Tom Wesselmann

February-March 2006

ollages not to scale



TOM WESSELMANN 14TH STREET MADE #1 1960 mixed media collage 45x55x10"



26



2



22



2



# Tom Wesselmann cont

February-March 2006



tuy or e re ue r nt  
6  
o l on canas  
2 n

t ll e 2 6  
o l an assemblage on comos t on boar  
2 n



reat mer can u e  
6  
o l an collage on canas  
20 n